

GORDON PLACE

KENSINGTON, W8





A bright two bedroom apartment within the heart of Kensington. This beautiful first floor flat is ideally situated on Gordon Place.

The apartment benefits from high ceilings, a reception room perfect for entertaining with a large bay window and views over the local area and a dining area. There is a semi-open plan kitchen. The apartment has a good size double bedroom, a further single bedroom/nursery/study and a family bathroom with rain forest shower above the bath. Gordon Place is a quiet street conveniently located close to Kensington High Street and Notting Hill Gate with the many shops, cafes and restaurants they have to offer. The green spaces of Kensington Gardens and Holland Park are nearby.



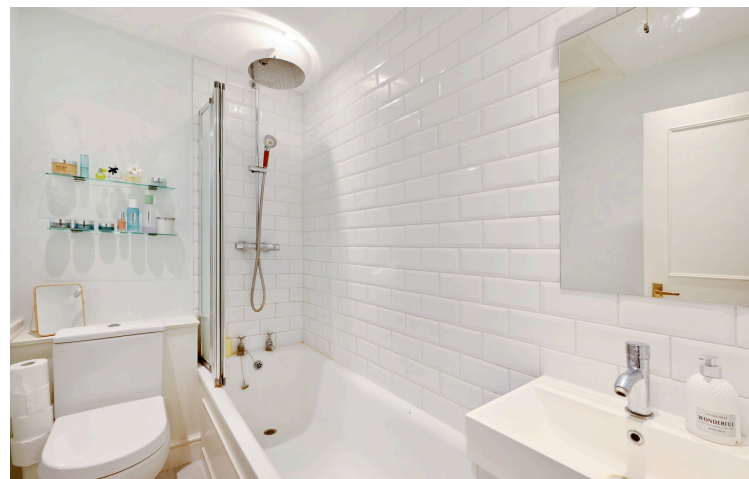
For excellent transport links, Kensington High Street Underground Station (District and Circle lines) and Notting Hill Gate Underground Station (District, Circle and Central lines) are a short walk away. Motorists will benefit from rapid routes to the West and Heathrow Airport via M4.

Material Information Parts B&C guidance as follows: Gas - Mains gas central heating. Water and Sewerage - mains water and sewerage. Internet- according to Ofcom, broadband services are available, including fibre. Mobile coverage - according to FTTP Pro, there is 3/4/5G mobile coverage at this address. Parking- enquire with local council Kensington and Chelsea, additional costs may be applicable. EPC rating D.

Fees may be applicable to potential tenants, please ask us for more details.

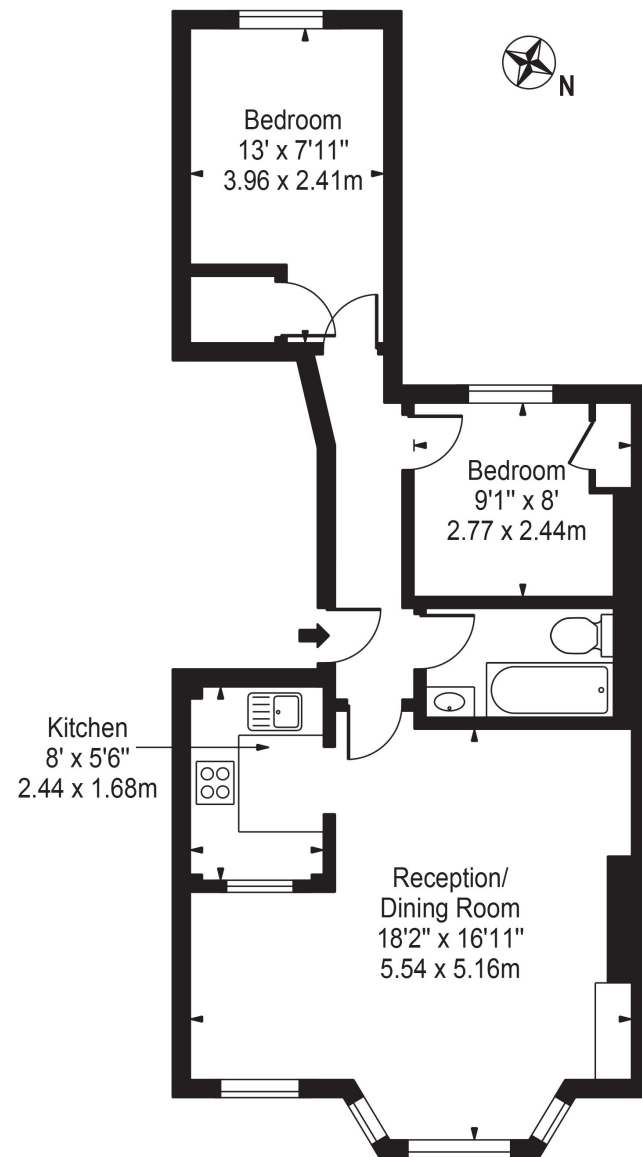


- First Floor Apartment
- Views over Kensington
- Lateral Apartment
- Unfurnished





GROSS INTERNAL AREA (APPROX.)
562 Sq Ft / 52.21 Sq M



First Floor

TERMS

Asking Price: £750 Per Week (£3,250 PCM)

Local Authority: Royal Borough of Kensington and Chelsea

Council Tax Band: F

Unfurnished

EPC: D

Fees may be applicable to potential tenants, please ask us for more details.

Maskells

105 Kensington Church Street, London W8 7LN

Tel: 0207 581 2216

sales@maskells.com

lettings@maskells.com

maskells.com